

Flange mounting MF1, MF2, Series CM1

- Cylinder mounting in accordance with ISO 15552
- Suitable piston Ø 32 40 50 63 80 100 125 mm



Standards

ISO 15552

Technical data

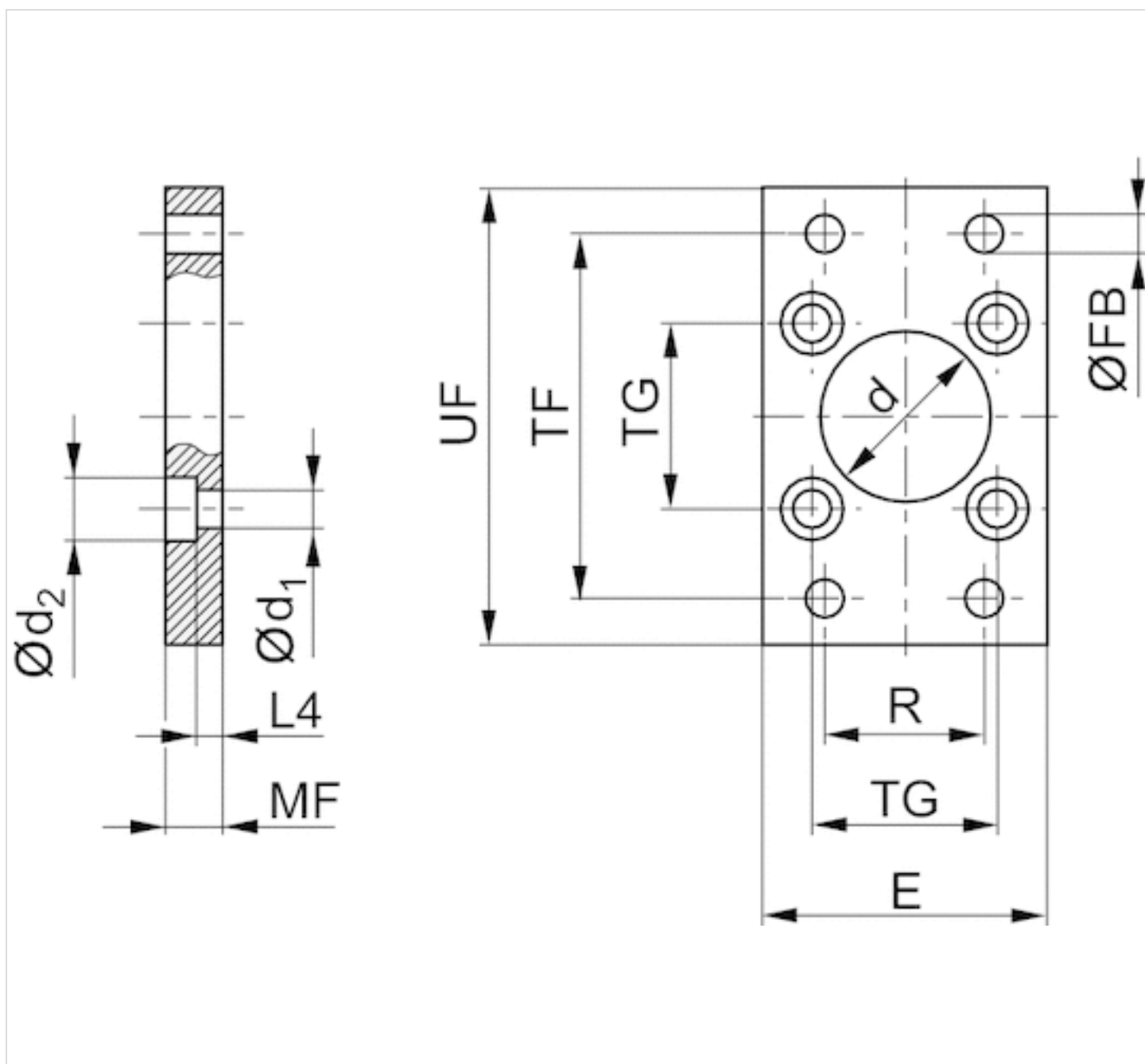
Part No.	Piston Ø
1827001277	32 mm
1827001278	40 mm
1827001279	50 mm
1827001499	63 mm
1827001281	80 mm
1827001282	100 mm
1827004861	125 mm

Scope of delivery: flange mounting incl. mounting screws

Technical information

Material	
Material	Steel
	galvanized
Screws	Steel
	galvanized

Dimensions



Dimensions

Part No.	Piston \varnothing	$\varnothing d$ H11	$\varnothing d_1$	$\varnothing d_2$	E max.	$\varnothing FB$	L4	MF	R	TF	TG	UF
1827001277	32 mm	30	6.6	11	50	7	4.5	10	32	64	32,5 \pm 0,2	80
1827001278	40 mm	35	6.6	11	55	9	4.5	10	36	72	38 \pm 0,2	90
1827001279	50 mm	40	9	15	65	9	6	12	45	90	46,5 \pm 0,2	110
1827001499	63 mm	45	9	15	75	9	6	12	50	100	56,5 \pm 0,2	125
1827001281	80 mm	45	11	18	100	12	9	16	63	126	72 \pm 0,2	154
1827001282	100 mm	55	11	18	120	14	9	16	75	150	89 \pm 0,2	186
1827004861	125 mm	60	14	20	140	16	10.5	20	90	180	110 \pm 0,3	220

Efficient pneumatic solutions, our program: cylinders and drives, valves and valve systems, air supply management



Visit us: [Emerson.com/Aventics](https://www.emerson.com/Aventics)

Your local contact: [Emerson.com/contactus](https://www.emerson.com/contactus)



[Emerson.com](https://www.emerson.com)



[Facebook.com/EmersonAutomationSolutions](https://www.facebook.com/EmersonAutomationSolutions)



[LinkedIn.com/company/Emerson-Automation-Solutions](https://www.linkedin.com/company/Emerson-Automation-Solutions)



[Twitter.com/EMR_Automation](https://twitter.com/EMR_Automation)

An example configuration is depicted on the title page. The delivered product may thus vary from that in the illustration. Subject to change. This Document, as well as the data, specifications and other information set forth in it, are the exclusive property of AVENTICS GmbH. It may not be reproduced or given to third parties without its consent. Only use the AVENTICS products shown in industrial applications. Read the product documentation completely and carefully before using the product. Observe the applicable regulations and laws of the respective country. When integrating the product into applications, note the system manufacturer's specifications for safe use of the product. The data specified only serve to describe the product. No statements concerning a certain condition or suitability for a certain application can be derived from our information. The information given does not release the user from the obligation of own judgement and verification. It must be remembered that the products are subject to a natural process of wear and aging.

The Emerson logo is a trademark and service mark of Emerson Electric Co. Brand logotype are registered trademarks of one of the Emerson family of companies. All other marks are the property of their respective owners. © 2020 Emerson Electric Co. All rights reserved.
2020-12



CONSIDER IT SOLVED™