

Rear eye MP4-HD, Series CM1

- Suitable for robust mechanical engineering applications, for clevis mounting MP2 and AB3
- Cylinder mounting in accordance with ISO 21287 ISO 15552
- Suitable piston Ø 16 20 25 32 40 50 63 80 100 mm



Standards

See table below

Technical data

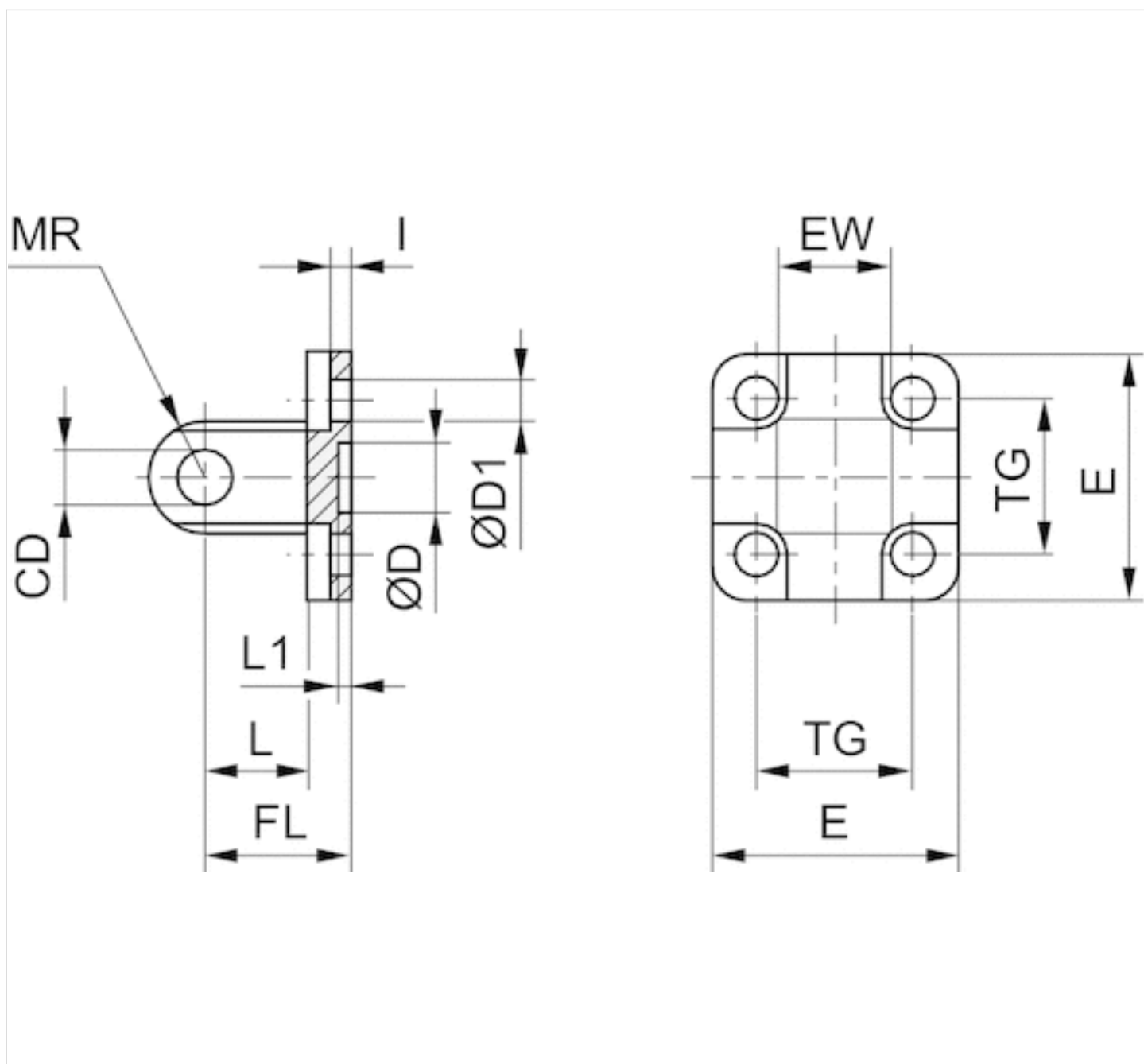
Part No.	Piston Ø	Swivel bearing Ø	Standardization	Housing material	Surface
1825805368	16 mm	6 mm	-	Die-cast aluminum	-
1827002300	20 mm	8 mm	ISO 21287	Steel	galvanized
1827002301	25 mm	8 mm	ISO 21287	Steel	galvanized
1827001283	32 mm	10 mm	ISO 15552	Aluminum (forged)	-
1827001284	40 mm	12 mm	ISO 15552	Aluminum (forged)	-
1827001285	50 mm	12 mm	ISO 15552	Aluminum (forged)	-
1827020086	63 mm	16 mm	ISO 15552	Aluminum (forged)	-
1827001287	80 mm	16 mm	ISO 15552	Aluminum (forged)	-
1827001288	100 mm	20 mm	ISO 15552	Aluminum (forged)	-

Scope of delivery: clevis incl. mounting screws

Technical information

Material	
Material	Die-cast aluminum Steel Aluminum (forged)
	galvanized
Screws	Steel
	galvanized

Dimensions



Dimensions

Part No.	Piston Ø	CD H9	Ø D	Ø D1	E	EW	FL ±0,2	I ±0,5	L min.	L1 min.
1825805368	16 mm	6	10 H13	4.5	27	12 -0.2/-0.6	16	2.6	10	3
1827002300	20 mm	8	12 H13	5.5	34	16 -0.2/-0.6	20	2.6	14	3
1827002301	25 mm	8	12 H13	5.5	40	16 -0.2/-0.6	20	2.6	14	3
1827001283	32 mm	10	30 H11	6.6	47.5	26 -0.2/-0.6	22	5.5	12	4.5
1827001284	40 mm	12	35 H11	6.6	53.5	28 -0.2/-0.6	25	5.5	15	4.5
1827001285	50 mm	12	40 H11	9	64	32 -0.2/-0.6	27	6.5	15	4.5
1827020086	63 mm	16	45 H11	9	74	40 -0.2/-0.6	32	6.5	20	4.5

Part No.	Piston Ø	CD H9	Ø D	Ø D1	E	EW	FL ±0,2	I ±0,5	L min.	L1 min.
1827001287	80 mm	16	45 H11	11	94	50 -0.2/-0.6	36	10	20	4.5
1827001288	100 mm	20	55 H11	11	113.5	60 -0.2/-0.6	41	10	25	4.5

MR max.	TG
6	18 ±0.2
8	22 ±0.4
8	26 ±0.4
10	32.5 ±0.2
12	38 ±0.2
12	46.5 ±0.2
16	56.5 ±0.2
16	72 ±0.2
20	89 ±0.2

Efficient pneumatic solutions, our program: cylinders and drives, valves and valve systems, air supply management



Visit us: [Emerson.com/Aventics](https://www.emerson.com/Aventics)

Your local contact: [Emerson.com/contactus](https://www.emerson.com/contactus)



[Emerson.com](https://www.emerson.com)



[Facebook.com/EmersonAutomationSolutions](https://www.facebook.com/EmersonAutomationSolutions)



[LinkedIn.com/company/Emerson-Automation-Solutions](https://www.linkedin.com/company/Emerson-Automation-Solutions)



[Twitter.com/EMR_Automation](https://twitter.com/EMR_Automation)

An example configuration is depicted on the title page. The delivered product may thus vary from that in the illustration. Subject to change. This Document, as well as the data, specifications and other information set forth in it, are the exclusive property of AVENTICS GmbH. It may not be reproduced or given to third parties without its consent. Only use the AVENTICS products shown in industrial applications. Read the product documentation completely and carefully before using the product. Observe the applicable regulations and laws of the respective country. When integrating the product into applications, note the system manufacturer's specifications for safe use of the product. The data specified only serve to describe the product. No statements concerning a certain condition or suitability for a certain application can be derived from our information. The information given does not release the user from the obligation of own judgement and verification. It must be remembered that the products are subject to a natural process of wear and aging.

The Emerson logo is a trademark and service mark of Emerson Electric Co. Brand logotype are registered trademarks of one of the Emerson family of companies. All other marks are the property of their respective owners. © 2020 Emerson Electric Co. All rights reserved.
2020-12



CONSIDER IT SOLVED™