

CILINDRI COMPATTI UNITOP Ø12-100

UNITOP COMPACT CYLINDERS Ø12-100



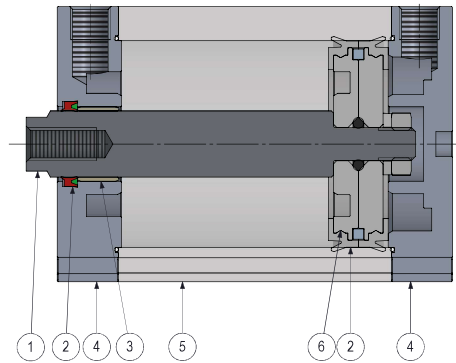
Cilindri compatti UNITOP disponibili da Ø16 a Ø100 in versione semplice e doppio effetto, magnetico e non, e con stelo standard o passante.

- Testate in alluminio pressofuso verniciato
- Guarnizioni in PU per alte performance e lunga durata
- Pistone in alluminio con pattino di guida in PTFE
- Interamente realizzabili in versione speciale a disegno

UNITOP compact cylinders produced from Ø16 up to Ø100 in single and double acting version, magnetic or not, and with standard or through piston rod.

- Painted die-casted aluminum covers
- High and long-lasting performances thanks to PU seals
- Aluminum piston with PTFE guiding ring
- Available in special version according to customer's drawing

MATERIALI STANDARD / STANDARD MATERIALS



Stelo <i>Piston rod</i>	Acciaio inox AISI303 <i>Stainless steel AISI303</i>
Guarnizioni <i>Seals</i>	Poliuretano / NBR <i>Polyurethane / NBR</i>
Boccola di guida <i>Guiding bush</i>	Acciaio + PTFE <i>Steel + PTFE</i>
Testate <i>Covers</i>	Alluminio pressofuso verniciato <i>Painted die-casted aluminum</i>
Tubo <i>Tube</i>	Alluminio anodizzato <i>Anodized aluminum</i>
Pistone <i>Piston</i>	Alluminio <i>Aluminum</i>

INFORMAZIONI TECNICHE / TECHNICAL INFORMATION

Fluido <i>Fluid</i>	Aria compressa filtrata lubrificata e non <i>Filtered and lubricated or not compressed air</i>
Temperatura impiego <i>Working temperature</i>	-30°C +80°C con aria secca <i>-30°C +80°C with dry air</i>
Pressione massima <i>Max pressure</i>	10 bar <i>10 bar</i>

CHIAVE DI CODIFICA / KEY CODE

Serie Serie	Versione Version			Diametro Diameter	Corsa Stroke	
UA	DE	0	M	F	Ø80	0100
	DE Doppio effetto Double acting	0 Standard Standard	M Magnetico Magnetic	M Filetto maschio Male thread	012 Ø12	XXXX corsa stroke
	SA Semplice effetto molla anteriore Single acting front spring	1 Passante Through rod	N Non magnetico Not magnetic	F Filetto femmina Female thread	...	
	SP Semplice effetto molla posteriore Single acting rear spring				100 Ø100	

VARIANTI STANDARD / STANDARD VARIANTS

Guarnizioni Seals	Costruzione Construction	Materiale Stelo Piston rod material	Prolunga stelo Extended piston rod	Filetto speciale Special piston rod thread	Atex Atex
HA	E	X	P020		T
HR Stelo Viton Viton rod seal	E Antirotazione Not rotating	Y AISI304 AISI304	PXXX P + mm P + mm	Su richiesta On request	
HA Tutto Viton All Viton		X AISI316 AISI316			

Per altre varianti costruttive e di materiali rivolgersi direttamente all'ufficio commerciale.
For other construction and material variants please contact the commercial department.

CILINDRI COMPATTI UNITOP Ø12-100

UNITOP COMPACT CYLINDERS Ø12-100

CORSE STANDARD / STANDARD STROKES

Ø	5	10	15	20	25	30	40	50	60	70	80	90	100	125	160	200	250	300	350	400	
12	*	*	*	*	*	*	*	*	*	*	*	*	*								
16	*	*	*	*	*	*	*	*	*	*	*	*	*	*							
20	*	*	*	*	*	*	*	*	*	*	*	*	*	*	*						
25	*	*	*	*	*	*	*	*	*	*	*	*	*	*	*						
32	*	*	*	*	*	*	*	*	*	*	*	*	*	*	*	*					
40	*	*	*	*	*	*	*	*	*	*	*	*	*	*	*	*					
50	*	*	*	*	*	*	*	*	*	*	*	*	*	*	*	*	*	*	*	*	*
63	*	*	*	*	*	*	*	*	*	*	*	*	*	*	*	*	*	*	*	*	*
80	*	*	*	*	*	*	*	*	*	*	*	*	*	*	*	*	*	*	*	*	*
100	*	*	*	*	*	*	*	*	*	*	*	*	*	*	*	*	*	*	*	*	*

Corse standard version semplice effetto (5-10-15-20-25-30-40-50)

Single acting cylinders standard strokes (15-10-15-20-25-30-40-50)

Corse fuori standard disponibili a listino e su richiesta

Not standard strokes available on request and on price list

FORZE TEORICHE / THEORETICAL FORCES

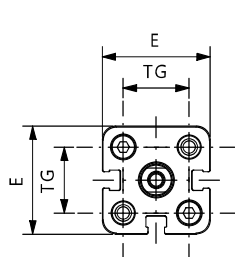
F teoriche a 6 bar Theoretical F at 6 bar

Ø	Forza di spinta (N) Thrust force (N)	Forza di trazione (N) Traction force (N)
12	67	50
16	121	91
20	188	141
25	294	247
32	482	414
40	754	633
50	1178	989
63	1869	1681
80	3014	2720
100	4710	4416

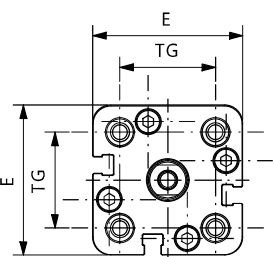
SEMPLICE EFFETTO MOLLA ANTERIORE SINGLE ACTING FRONT SPRING



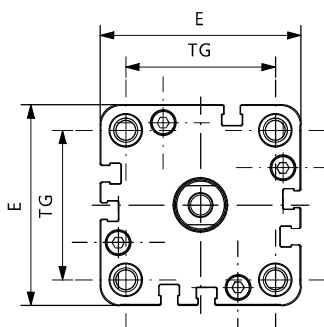
UASA0N - UASA0M



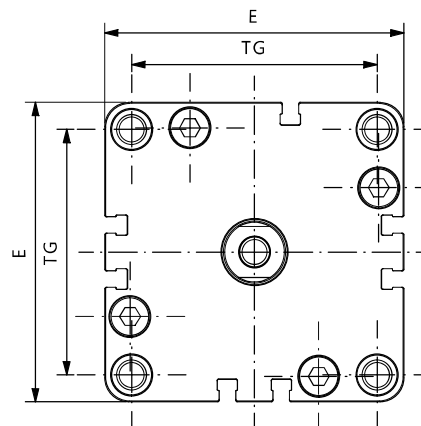
Ø12 - Ø16 - Ø20 - Ø25



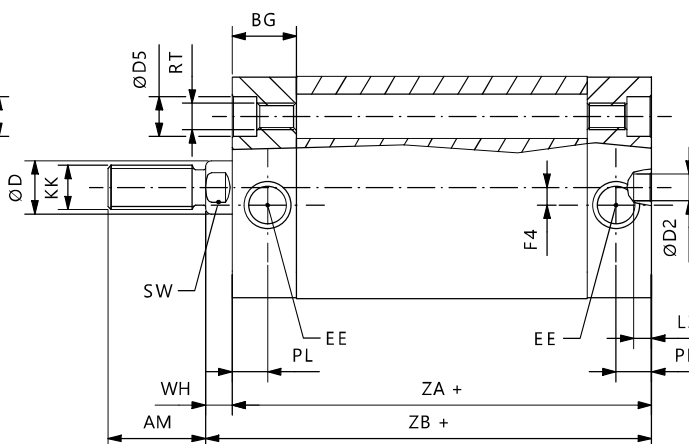
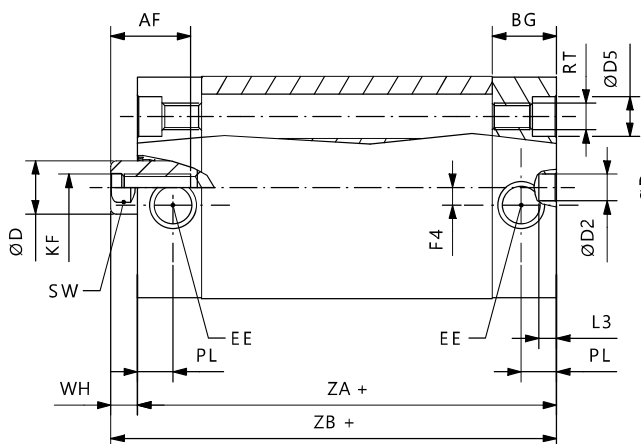
Ø32 - Ø40



Ø50



Ø63 - Ø80 - Ø100



Ø	E	ØD2	RT	ØD5	KF	ØD	EE	PL	BG	TG	SW	L3	AF	WH	ZA	AM	KK	ZB	F4
12	29	6	M4	6	M3	6	M5	8	12,25	18	5	4	8	4,5	38	16	M6x1	42,5	-
16	29	6	M4	6	M4	8	M5	8	12,25	18	6	4	11	4,5	38	20	M8x1	42,5	-
20	36	6	M5	7,5	M5	10	M5	8	12,25	22	8	4	12	4,5	38	22	M10x1,25	42,5	-
25	40	6	M5	7,5	M5	10	M5	8	12,75	26	8	4	12	5,5	39,5	22	M10x1,25	45	-
32	50	6	M6	9	M6	12	1/8 G	8	14,5	32	10	4	15	6	44,5	22	M10x1,25	50,5	4
40	58	6	M6	9	M6	12	1/8 G	8	14,75	42	10	4	15	6,5	45,5	22	M10x1,25	51	3
50	67	6	M8	10,5	M8	16	1/8 G	8	14,75	50	13	4	17	7,5	45,5	24	M12x1,25	53	-
63	80	8	M10	13,5	M8	16	1/8 G	8	14,25	62	13	4	17	7,5	50	24	M12x1,25	57,5	-
80	100	8	M10	13,5	M10	20	1/8 G	8,5	16	82	17	4	17	8	56	32	M16x1,5	64	-
100	124	8	M10	13,5	M12	25	1/4 G	10,5	19,25	103	22	4	22	10	66,5	40	M20x1,5	76,5	-

+ = sommare corsa / plus stroke length

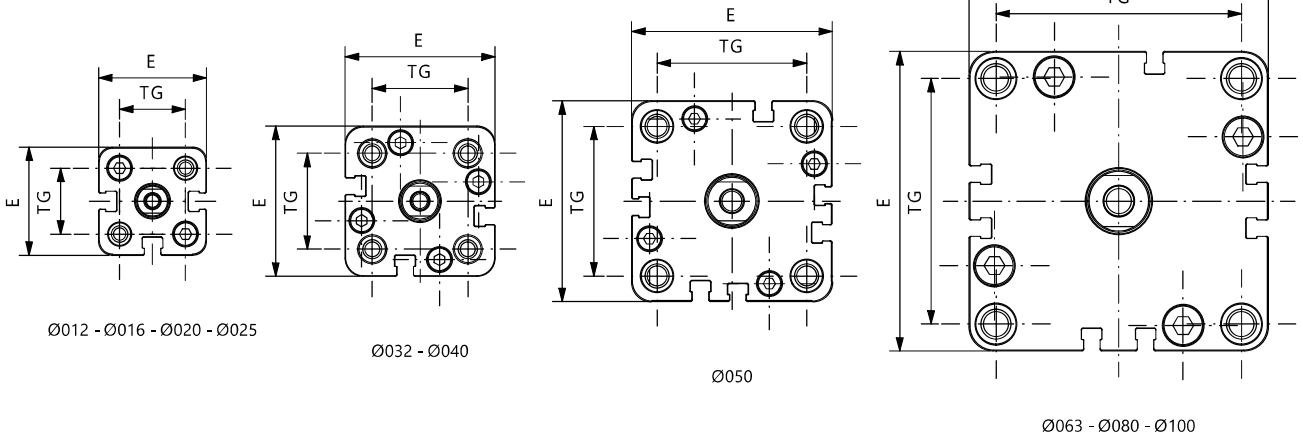
CILINDRI COMPATTI UNITOP Ø12-100

UNITOP COMPACT CYLINDERS Ø12-100

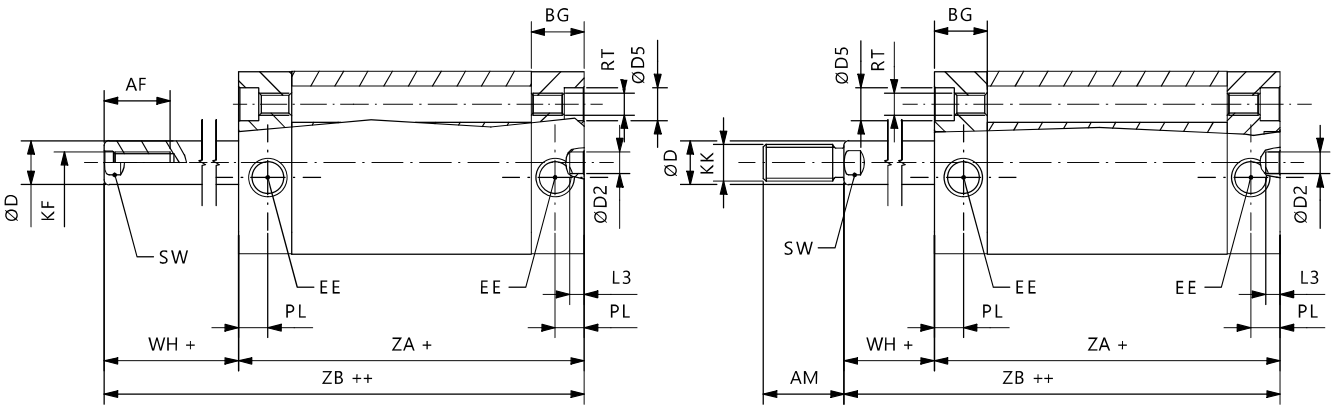
SEMPLICE EFFETTO MOLLA POSTERIORE
SINGLE ACTING REAR SPRING



UASPON - UASPOM



Cilindri compatti UNITOP Ø12-100 - UNITOP compact cylinders Ø12-100



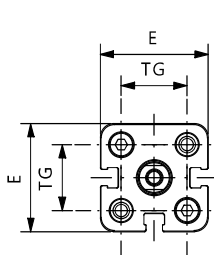
Ø	E	ØD2	RT	ØD5	KF	ØD	EE	PL	BG	TG	SW	L3	AF	WH	ZA	AM	KK	ZB	F4
12	29	6	M4	6	M3	6	M5	8	12,25	18	5	4	8	4,5	38	16	M6x1	42,5	-
16	29	6	M4	6	M4	8	M5	8	12,25	18	6	4	11	4,5	38	20	M8x1	42,5	-
20	36	6	M5	7,5	M5	10	M5	8	12,25	22	8	4	12	4,5	38	22	M10x1,25	42,5	-
25	40	6	M5	7,5	M5	10	M5	8	12,75	26	8	4	12	5,5	39,5	22	M10x1,25	45	-
32	50	6	M6	9	M6	12	1/8 G	8	14,5	32	10	4	15	6	44,5	22	M10x1,25	50,5	4
40	58	6	M6	9	M6	12	1/8 G	8	14,75	42	10	4	15	6,5	45,5	22	M10x1,25	51	3
50	67	6	M8	10,5	M8	16	1/8 G	8	14,75	50	13	4	17	7,5	45,5	24	M12x1,25	53	-
63	80	8	M10	13,5	M8	16	1/8 G	8	14,25	62	13	4	17	7,5	50	24	M12x1,25	57,5	-
80	100	8	M10	13,5	M10	20	1/8 G	8,5	16	82	17	4	17	8	56	32	M16x1,5	64	-
100	124	8	M10	13,5	M12	25	1/4 G	10,5	19,25	103	22	4	22	10	66,5	40	M20x1,5	76,5	-

+ = sommare corsa / plus stroke length
 ++ = sommare 2 x corsa / plus stroke length x 2

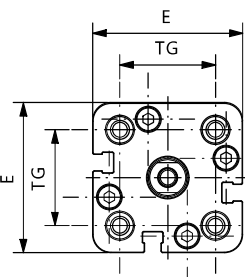
DOPPIO EFFETTO DOUBLE ACTING



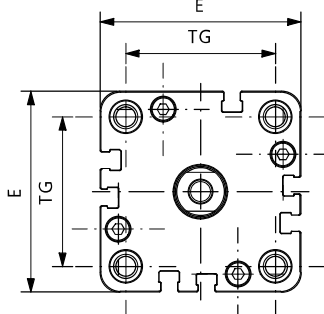
UADE0N - UADE0M



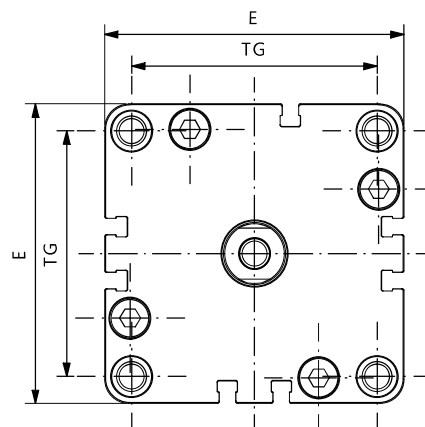
Ø012 - Ø016 - Ø020 - Ø025



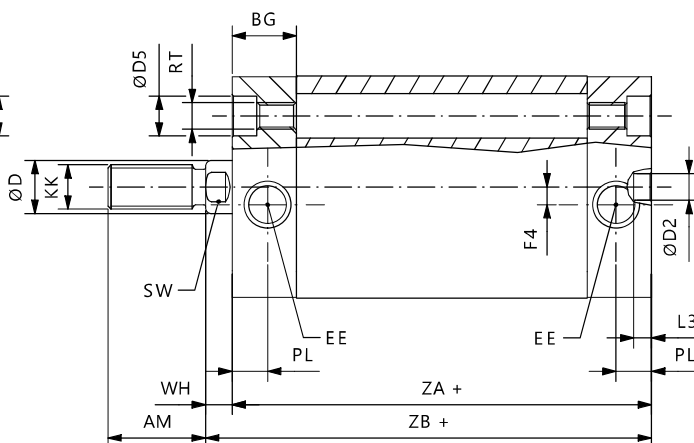
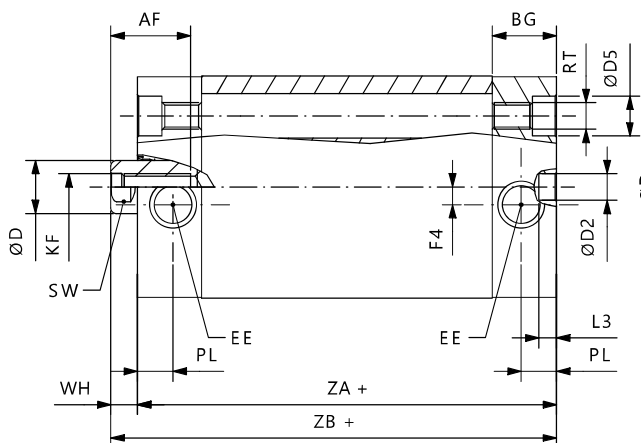
Ø032 - Ø040



Ø050



Ø063 - Ø080 - Ø100



Ø	E	ØD2	RT	ØD5	KF	ØD	EE	PL	BG	TG	SW	L3	AF	WH	ZA	AM	KK	ZB	F4
12	29	6	M4	6	M3	6	M5	8	12,25	18	5	4	8	4,5	38	16	M6x1	42,5	-
16	29	6	M4	6	M4	8	M5	8	12,25	18	6	4	11	4,5	38	20	M8x1	42,5	-
20	36	6	M5	7,5	M5	10	M5	8	12,25	22	8	4	12	4,5	38	22	M10x1,25	42,5	-
25	40	6	M5	7,5	M5	10	M5	8	12,75	26	8	4	12	5,5	39,5	22	M10x1,25	45	-
32	50	6	M6	9	M6	12	1/8 G	8	14,5	32	10	4	15	6	44,5	22	M10x1,25	50,5	4
40	58	6	M6	9	M6	12	1/8 G	8	14,75	42	10	4	15	6,5	45,5	22	M10x1,25	51	3
50	67	6	M8	10,5	M8	16	1/8 G	8	14,75	50	13	4	17	7,5	45,5	24	M12x1,25	53	-
63	80	8	M10	13,5	M8	16	1/8 G	8	14,25	62	13	4	17	7,5	50	24	M12x1,25	57,5	-
80	100	8	M10	13,5	M10	20	1/8 G	8,5	16	82	17	4	17	8	56	32	M16x1,5	64	-
100	124	8	M10	13,5	M12	25	1/4 G	10,5	19,25	103	22	4	22	10	66,5	40	M20x1,5	76,5	-

+ = sommare corsa / plus stroke length

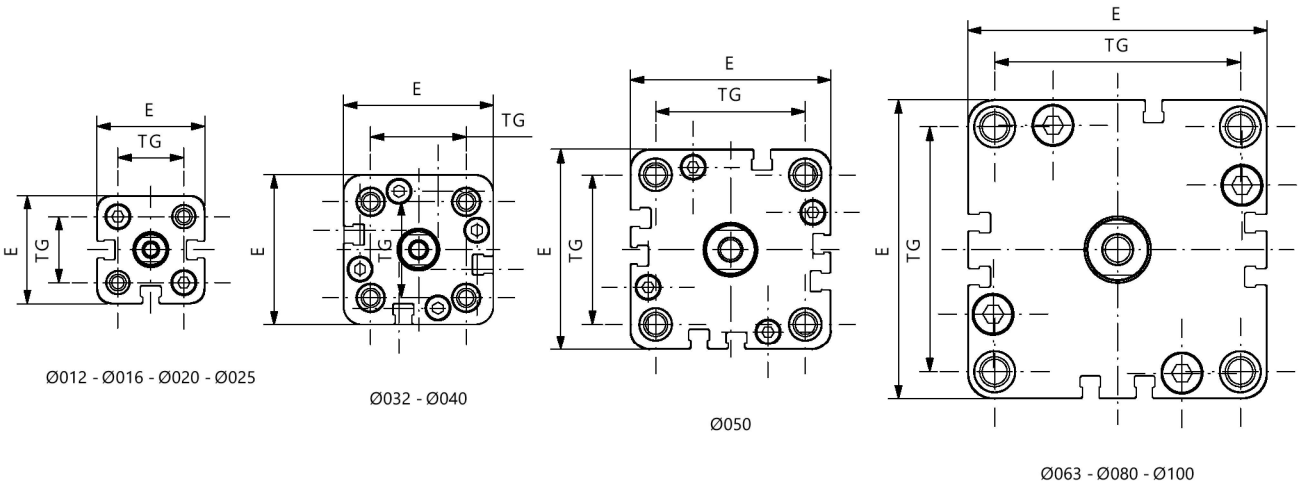
CILINDRI COMPATTI UNITOP Ø12-100

UNITOP COMPACT CYLINDERS Ø12-100

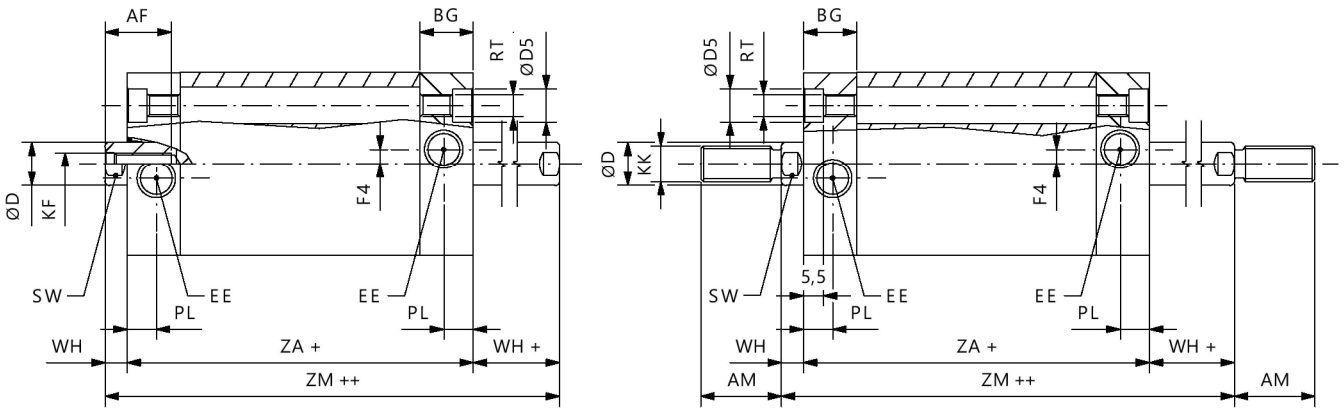
DOPPIO EFFETTO PASSANTE
DOUBLE ACTING THROUGH ROD



UADE1N - UADE1M



Cilindri compatti UNITOP Ø12-100 - UNITOP compact cylinders Ø12-100

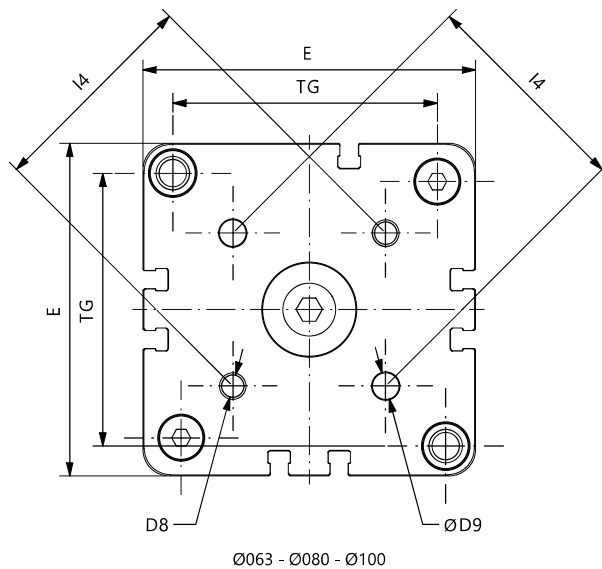
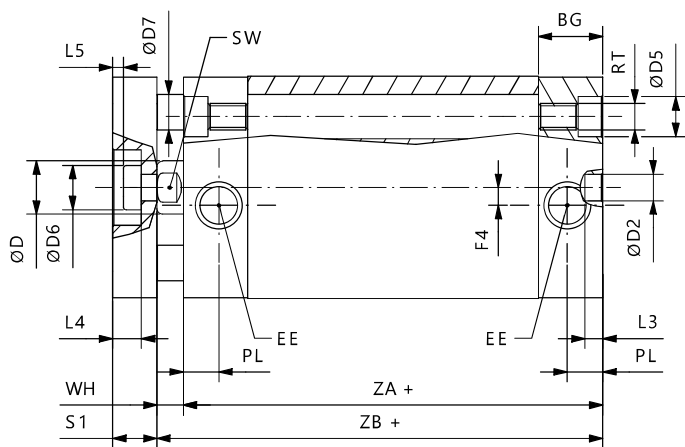
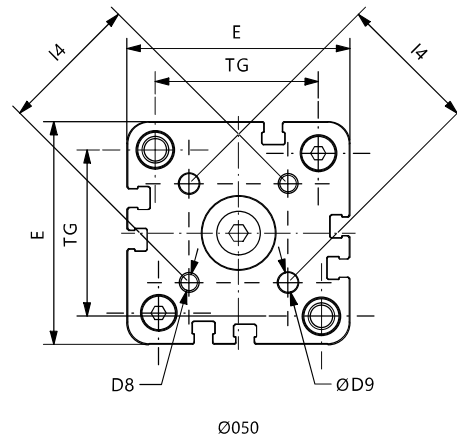
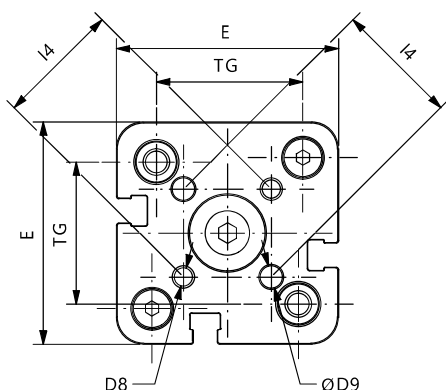
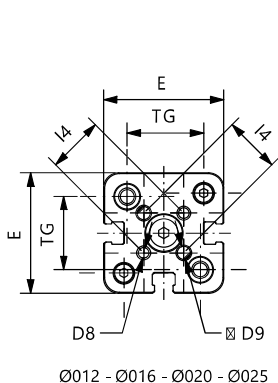
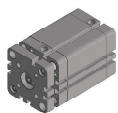


Ø	E	ØD2	RT	ØD5	KF	ØD	EE	PL	BG	TG	SW	L3	AF	WH	ZA	AM	KK	ZM	F4
12	29	6	M4	6	M3	6	M5	8	12,25	18	5	4	8	4,5	38	16	M6x1	47	-
16	29	6	M4	6	M4	8	M5	8	12,25	18	6	4	11	4,5	38	20	M8x1	47	-
20	36	6	M5	7,5	M5	10	M5	8	12,25	22	8	4	12	4,5	38	22	M10x1,25	47	-
25	40	6	M5	7,5	M5	10	M5	8	12,75	26	8	4	12	5,5	39,5	22	M10x1,25	50,5	-
32	50	6	M6	9	M6	12	1/8 G	8	14,5	32	10	4	15	6	44,5	22	M10x1,25	56,5	4
40	58	6	M6	9	M6	12	1/8 G	8	14,75	42	10	4	15	6,5	45,5	22	M10x1,25	58,5	3
50	67	6	M8	10,5	M8	16	1/8 G	8	14,75	50	13	4	17	7,5	45,5	24	M12x1,25	60,5	-
63	80	8	M10	13,5	M8	16	1/8 G	8	14,25	62	13	4	17	7,5	50	24	M12x1,25	65	-
80	100	8	M10	13,5	M10	20	1/8 G	8,5	16	82	17	4	17	8	56	32	M16x1,5	72	-
100	124	8	M10	13,5	M12	25	1/4 G	10,5	19,25	103	22	4	22	10	66,5	40	M20x1,5	86,5	-

+ = **sommare corsa / plus stroke length**

++ = **sommare 2 x corsa / plus stroke length x 2**

DOPPIO EFFETTO ANTIROTAZIONE DOUBLE ACTING NOT ROTATING



Ø	E	ØD2	RT	ØD5	KF	ØD6	EE	PL	BG	TG	SW	L3	AF	WH	ZA	ZB	F4	I4	L4	L5	S1	ØD7	ØD	ØD8	ØD9
16	29	6	M4	6	M4	8	M5	8	12,25	18	6	4	8	4,5	38	42,5	-	14	3,8	1	6	5	9	M3	3
20	36	6	M5	7,5	M5	10	M5	8	12,25	22	8	4	10	4,5	38	42,5	-	17	5	1,5	8	5	11	M4	4
25	40	6	M5	7,5	M5	10	M5	8	12,75	26	8	4	10	5,5	39,5	45	-	22	5	1,5	8	6	14	M5	5
32	50	6	M6	9	M6	12	1/8 G	8	14,5	32	10	4	12	6	44,5	50,5	4	28	6,5	2,5	10	8	17	M5	5
40	58	6	M6	9	M6	12	1/8 G	8	14,75	42	10	4	12	6,5	45,5	52	3	33	6,5	2,5	10	10	17	M5	5
50	67	6	M8	10,5	M8	16	1/8 G	8	14,75	50	13	4	12	7,5	45,5	53	-	42	7,5	2,5	12	10	22	M6	6
63	80	8	M10	13,5	M8	16	1/8 G	8	14,25	62	13	4	14	7,5	50	57,5	-	50	7,5	2,5	12	10	22	M6	6
80	100	8	M10	13,5	M10	20	1/8 G	8,5	16	82	17	4	15	8	56	64	-	65	9	3	14	14	28	M8	8
100	124	8	M10	13,5	M12	25	1/4 G	10,5	19,25	103	22	4	20	10	66,5	76,5	-	80	10	3	14	14	30	M10	10

+ = sommare corsa / plus stroke length

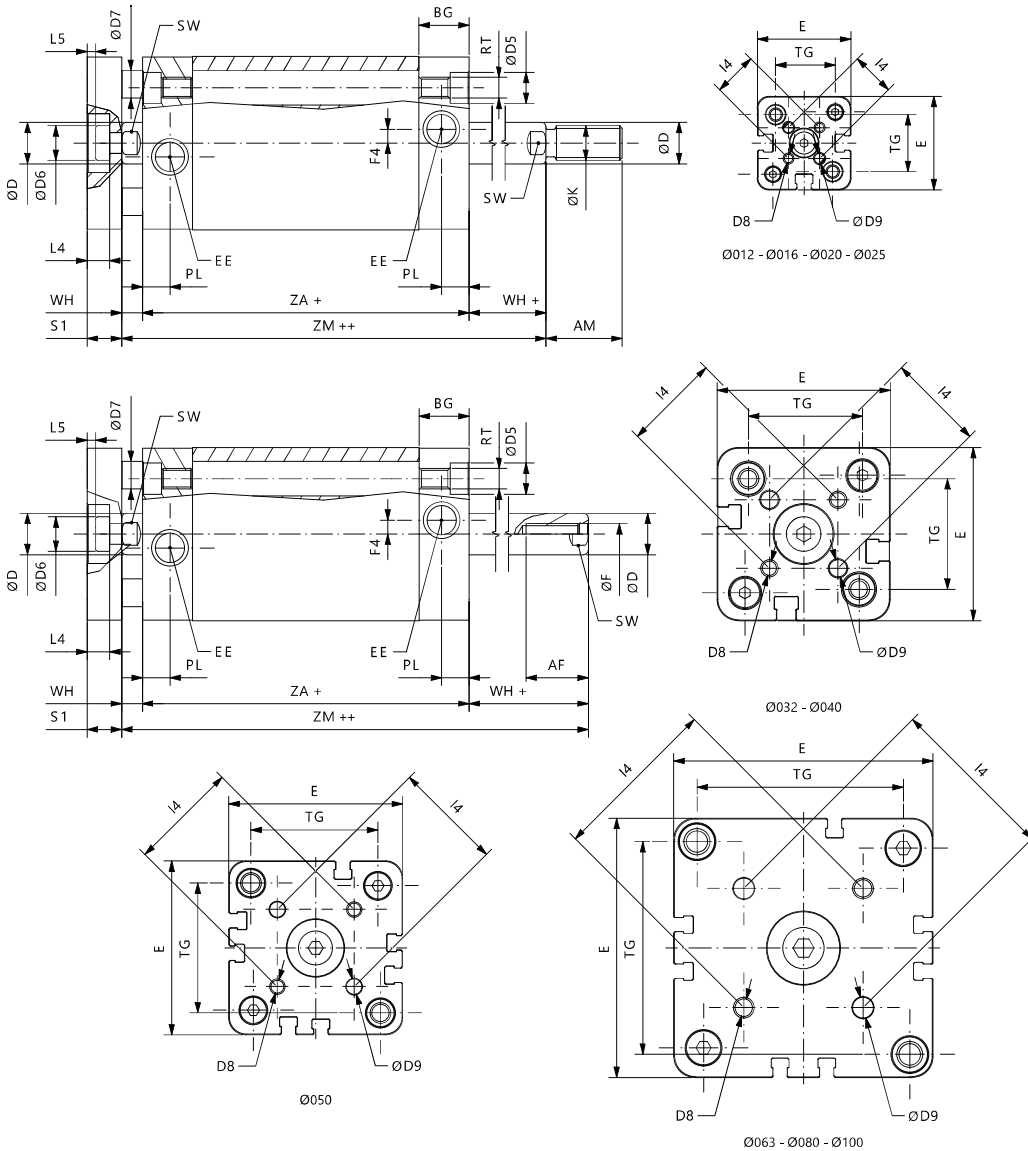
CILINDRI COMPATTI UNITOP Ø12-100

UNITOP COMPACT CYLINDERS Ø12-100

DOPPIO EFFETTO ANTIROTAZIONE PASSANTE
DOUBLE ACTING NOT ROTATING THROUGH ROD



UADE1N E - UADE1M E



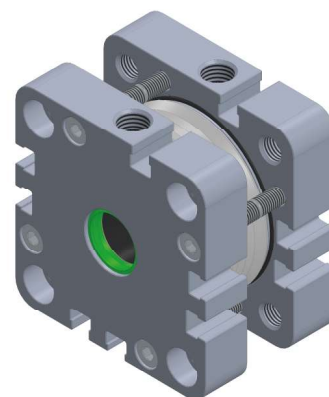
Cilindri compatti UNITOP Ø12-100 - UNITOP compact cylinders Ø12-100

Ø	E	ØD2	RT	ØD5	KF	ØD6	EE	PL	BG	TG	SW	L3	AF	WH	ZA	ZM	F4	I4	L4	L5	S1	ØD7	ØD	ØD8	ØD9
16	29	6	M4	6	M4	8	M5	8	12,25	18	6	4	8	4,5	38	47	-	14	3,8	1	6	5	9	M3	3
20	36	6	M5	7,5	M5	10	M5	8	12,25	22	8	4	10	4,5	38	47	-	17	5	1,5	8	5	11	M4	4
25	40	6	M5	7,5	M5	10	M5	8	12,75	26	8	4	10	5,5	39,5	50,5	-	22	5	1,5	8	6	14	M5	5
32	50	6	M6	9	M6	12	1/8 G	8	14,5	32	10	4	12	6	44,5	56,5	4	28	6,5	2,5	10	8	17	M5	5
40	58	6	M6	9	M6	12	1/8 G	8	14,75	42	10	4	12	6,5	45,5	58,5	3	33	6,5	2,5	10	10	17	M5	5
50	67	6	M8	10,5	M8	16	1/8 G	8	14,75	50	13	4	12	7,5	45,5	60,5	-	42	7,5	2,5	12	10	22	M6	6
63	80	8	M10	13,5	M8	16	1/8 G	8	14,25	62	13	4	14	7,5	50	65	-	50	7,5	2,5	12	10	22	M6	6
80	100	8	M10	13,5	M10	20	1/8 G	8,5	16	82	17	4	15	8	56	72	-	65	9	3	14	14	28	M8	8
100	124	8	M10	13,5	M12	25	1/4 G	10,5	19,25	103	22	4	20	10	66,5	86,5	-	80	10	3	14	14	30	M10	10

KIT DI MONTAGGIO MOUNTING KIT

Contenuto del Kit - Kit parts
Testata anteriore completa / Assembled front cover
Testata posteriore completa / Assembled rear cover
Pistone completo / Complete piston
Viti fissaggio testate / Locking screws
Tappi protezione alimentazioni / Air supply protection caps

Kit disponibile anche nelle altre versioni
Kit available also in other versions



BARRA STELO PISTON ROD BAR

Ø cilindro Ø cylinder	Barra stelo in AISI303 AISI303 piston rod bar	Barra stelo in AISI316 AISI316 piston rod bar	Ø
12	V30BRT0306000	V30BRT0506000	6
16	V30BRT0308000	V30BRT0508000	8
20	V30BRT0310000	V30BRT0510000	10
25	V30BRT0310000	V30BRT0510000	10
32	V30BRT0312000	V30BRT0512000	12
40	V30BRT0312000	V30BRT0512000	12
50	V30BRT0316000	V30BRT0516000	16
63	V30BRT0316000	V30BRT0516000	16
80	V30BRT0320000	V30BRT0520000	20
100	V30BRT0325000	V30BRT0525000	25



Barre lunghezza 3 metri
3 meter long bars

BARRA TUBO TUBE BAR

Ø	Barra tubo in alluminio anodizzato Anodized aluminum tube bar
12	V30TG20012000
16	V30TG20016000
20	V30TG20020000
25	V30TG20025000
32	V30TG20320000
40	V30TG20040000
50	V30TG20050000
63	V30TG20063000
80	V30TG20080000
100	V30TG200A0000

Barre lunghezza 3 metri
3 meter long bars

