






Festo compatible

Ø32 mm - Ø63 mm | 1112 / 2538 / 2334 | 28-06-2024

UNIC
STAINLESS CYLINDER

Type overview

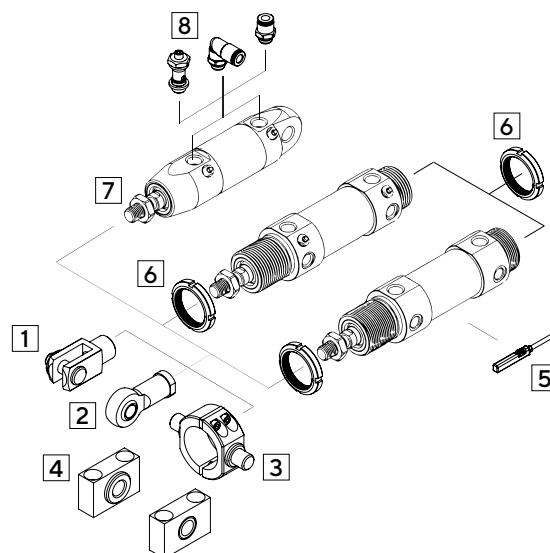
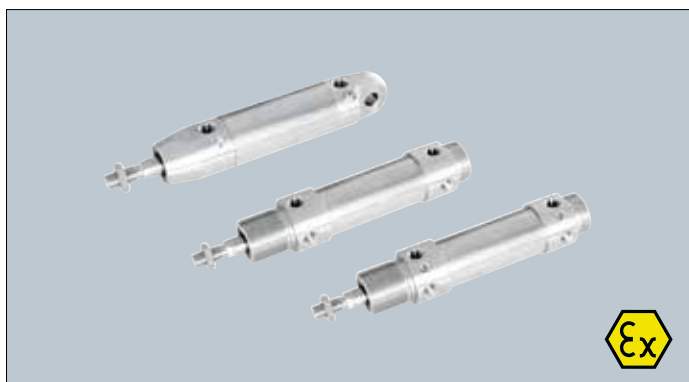
Type	1112 	2538 	2334 
------	---	---	---

Cylinder accessories					
					

Festo compatible

Ø32 mm - Ø63 mm | 1112 / 2538 / 2334 | 28-06-2024

UNIC
STAINLESS CYLINDER



Specifications

Diameter:	Ø32 mm - Ø63 mm
Replaces:	CRDSNU / CRDSW
Working pressure:	10 bar
Temperature:	-20°C til +80°C
Standard strokes:	10-500 mm

Materials

Piston rod, Accessories, Cylinder tube, Front and rear caps	AISI 304 / (EN 1.4301)
Piston:	POM
Wiper:	Nitrile rubber / polyurethane
O-rings:	Viton

Standard

Magnet for detection
Adjustable end stroke-cushioning

Options

AISI 316L (EN 1.4404)
Cylinder with enhanced chemical resistance
Heat-resistant cylinder max +150°C
Customized according to request
Renovation / Rep. kit (Page 54)

Ordering key

Ø40 x 150 mm = **U040 0150 2538**

Heat-resistant cylinder H
(Does not apply 1112):
Chemical resistant cylinder: C
Cylinder with **PTFE** wiper: P

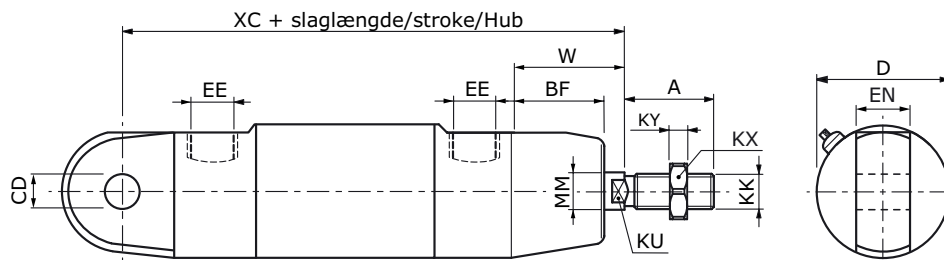
Tilbehør	Side ->
1 Clevis mounting, slim	45
2 Stempelstangsgaffel	40
3 Rod clevis	40
4 Rod eye	46
5 Pivot attachment	47
6 Reed sensor	48
7 Neck nut	38
8 Piston rod nut	39
9 Fittings	49

Theoretical cylinder forces given in Newton

Cyl. Ø	Piston rod Ø	Piston area cm ²		3 bar		4 bar		5 bar			
		8,0	6,9	236	203	315	271	394	339		
40	16	12,6	10,6	369	310	493	414	616	517		
50	20	19,6	16,5	577	485	770	647	962	808		
63	20	31,1	28,0	916	824	1222	1099	1527	1374		
		6 bar		7 bar		8 bar		9 bar		10 bar	
473	406	552	474	631	542	709	610	788	677		
739	621	862	724	985	828	1108	931	1232	1034		
1155	970	1347	1131	1539	1293	1732	1455	1924	1616		
1833	1648	2138	1923	2444	2198	2749	2472	3055	2747		

Festo compatible

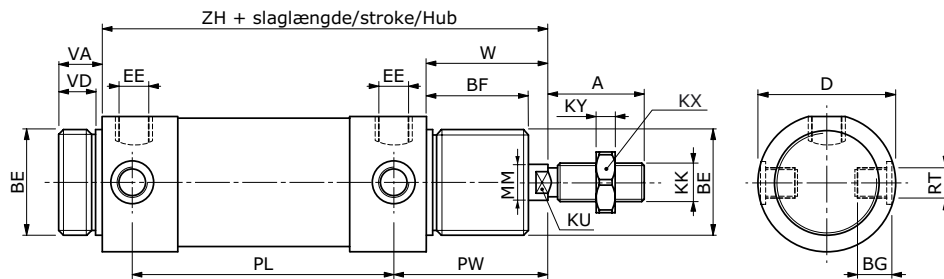
Technical data | 05-01-2024



1112

Ø	A	BF	CD	D	EE	EN	KK	KU	KX	KY	MM	W	XC
32	22	20	Ø10	33,6	G1/8"	16	M10x1,25	10	17	5	Ø12	34	118
40	24	22	Ø12	41,6	G1/4"	18	M12x1,25	13	19	6	Ø16	39	140
50	32	29	Ø16	52,4	G1/4"	21	M16x1,50	17	24	6	Ø20	44	147
63	32	29	Ø16	65,4	G3/8"	21	M16x1,50	17	24	6	Ø20	44	156

*Note. All dimensions are with 0.0 mm stroke.



2538/2334

Ø	A	BE	BF	BG	D	EE	KK	KU	KX	KY	MM	PL	PW	RT	VA	VD	W	ZH
32	22	M30x1,50	30	6,6	38	G1/8"	M10x1,25	10	17	5	Ø12	78	47	M8x1,00	14	12	38	134
40	24	M38x1,50	35	9,6	49	G1/4"	M12x1,25	13	19	6	Ø16	89	57	M10x1,00	16	13	45	158
50	32	M45x1,50	38	12,6	59	G1/4"	M16x1,50	17	24	6	Ø20	96	62	M12x1,50	18	15	50	170
63	32	M45x1,50	38	15,5	70	G3/8"	M16x1,50	17	24	6	Ø20	98	63	M14x1,50	18	15	50	174

*Note. All dimensions are with 0.0 mm stroke.