

Clevis mounting AB6, Series CM1

- Cylinder mounting in accordance with ISO 15552

- Suitable piston Ø 32, 40, 50, 63, 80, 100, 125, 160, 200, 250, 320 mm



Standards

ISO 15552

Technical data

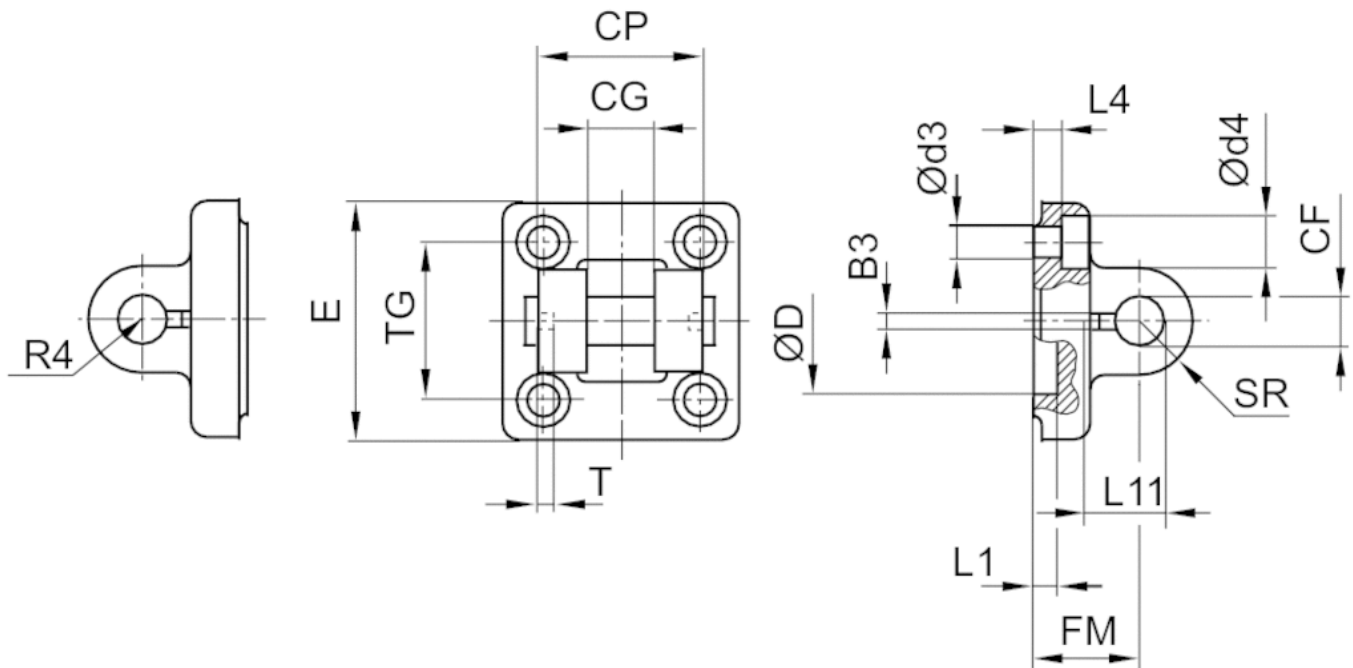
Part No.	Piston Ø	Swivel bearing Ø	Housing material	Surface
1827001593	32 mm	10 mm	Aluminum (forged)	-
1827001594	40 mm	12 mm	Aluminum (forged)	-
1827001595	50 mm	16 mm	Aluminum (forged)	-
1827002024	63 mm	16 mm	Aluminum (forged)	-
1827001597	80 mm	20 mm	Aluminum (forged)	-
1827001598	100 mm	20 mm	Aluminum (forged)	-
1827001599	125 mm	30 mm	Aluminum (forged)	-
1827001600	160 mm	35 mm	Nodular graphite iron	galvanized
1827001601	200 mm	35 mm	Nodular graphite iron	galvanized
1827001602	250 mm	40 mm	Nodular graphite iron	galvanized
5239013432	320 mm	50 mm	Nodular graphite iron	galvanized

Scope of delivery: clevis mounting incl. pivot pins and mounting screws

Technical information

Material	
Material	Aluminum (forged) Nodular graphite iron
	galvanized
Screws	Steel
	galvanized

Dimensions



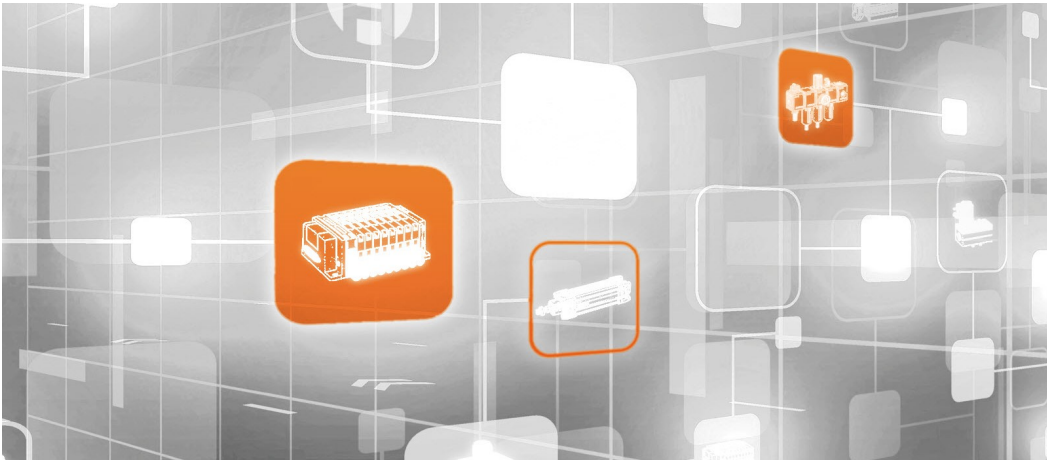
Dimensions

Part No.	Piston Ø	B3 ±0,2	Ø CF F7	CG D10	CP d12	Ø d3	Ø d4	Ø D	E	FM ±0,2
1827001593	32 mm	3.3	10	14	34	6.6	11	30	46	22
1827001594	40 mm	4.3	12	16	40	6.6	11	35	52	25
1827001595	50 mm	4.3	16	21	45	9	15	40	64	27
1827002024	63 mm	4.3	16	21	51	9	15	45	74	32
1827001597	80 mm	4.3	20	25	65	11	18	45	94	36
1827001598	100 mm	4.3	20	25	75	11	18	55	113	41
1827001599	125 mm	6.3	30	37	97	14	20	60	138	50

Part No.	Piston Ø	B3 ±0,2	Ø CF F7	CG D10	CP d12	Ø d3	Ø d4	Ø D	E	FM ±0,2
1827001600	160 mm	6.3	35	43	122	18	26	65	176	55
1827001601	200 mm	6.3	35	43	122	18	26	75	216	60
1827001602	250 mm	8.3	40	49	125	22	33	90	275	70
5239013432	320 mm	8.3	50	60	150	26	36	110	340	80

L1 min.	L4 ±0,5	L11 -0,5	R4	SR	T ±0,2	TG
4.5	5.5	16.5	17	10	3	32,5 ±0,2
4.5	5.5	18	20	12	4	38 ±0,2
4.5	6.5	23	22	15	4	46,5 ±0,2
4.5	6.5	23	25	15	4	56,5 ±0,2
4.5	10	27	30	20	4	72 ±0,2
4.5	10	27	32	20	4	89 ±0,2
7	10	40	42	26	6	110 ±0,3
10	10	45	46	33	6	140 ±0,3
10	11	45	49	33	6	175 ±0,3
12	11	53	55	40	8	220 ±0,3
11	15	69	65	50	8	270 ±0,3

Efficient pneumatic solutions, our program: cylinders and drives, valves and valve systems, air supply management



Visit us: [Emerson.com/Aventics](https://www.emerson.com/Aventics)

Your local contact: [Emerson.com/contactus](https://www.emerson.com/contactus)



Emerson.com



[Facebook.com/EmersonAutomationSolutions](https://www.facebook.com/EmersonAutomationSolutions)



[LinkedIn.com/company/Emerson-Automation-Solutions](https://www.linkedin.com/company/Emerson-Automation-Solutions)



[Twitter.com/EMR_Automation](https://twitter.com/EMR_Automation)

An example configuration is depicted on the title page. The delivered product may thus vary from that in the illustration. Subject to change. This Document, as well as the data, specifications and other information set forth in it, are the exclusive property of AVENTICS GmbH. It may not be reproduced or given to third parties without its consent. Only use the AVENTICS products shown in industrial applications. Read the product documentation completely and carefully before using the product. Observe the applicable regulations and laws of the respective country. When integrating the product into applications, note the system manufacturer's specifications for safe use of the product. The data specified only serve to describe the product. No statements concerning a certain condition or suitability for a certain application can be derived from our information. The information given does not release the user from the obligation of own judgement and verification. It must be remembered that the products are subject to a natural process of wear and aging.

The Emerson logo is a trademark and service mark of Emerson Electric Co. Brand logotype are registered trademarks of one of the Emerson family of companies. All other marks are the property of their respective owners. © 2020 Emerson Electric Co. All rights reserved.
2020-12



CONSIDER IT SOLVED™